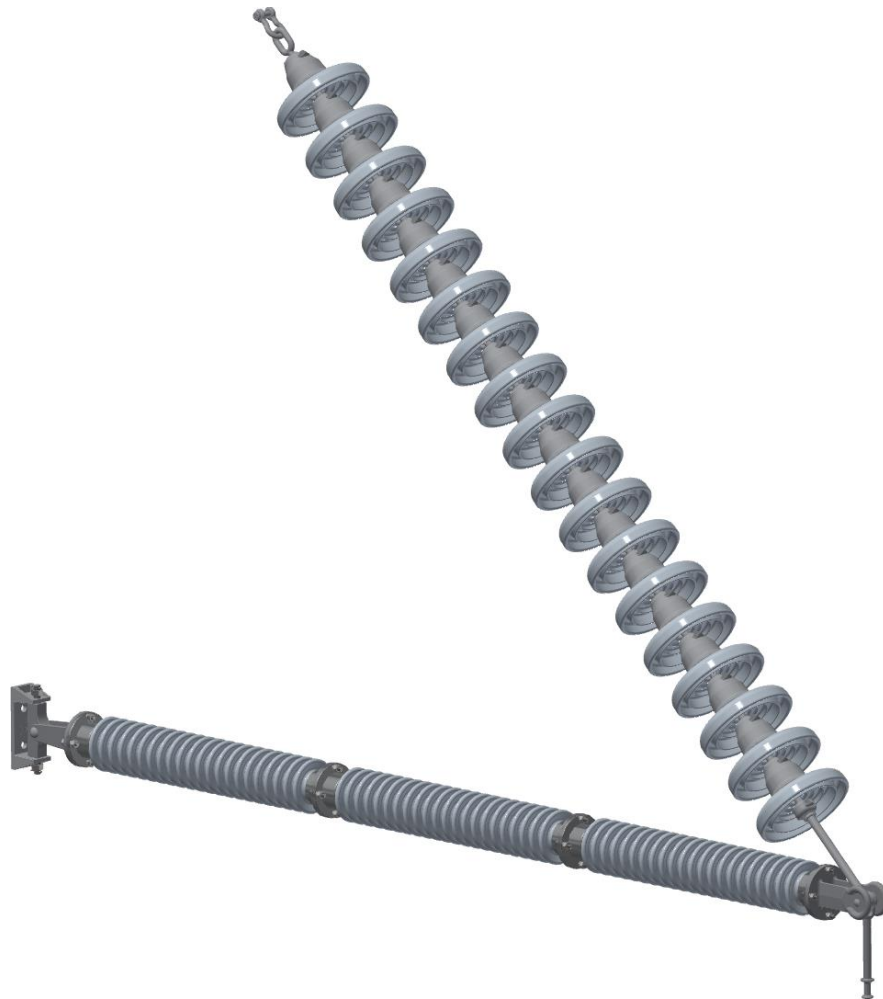


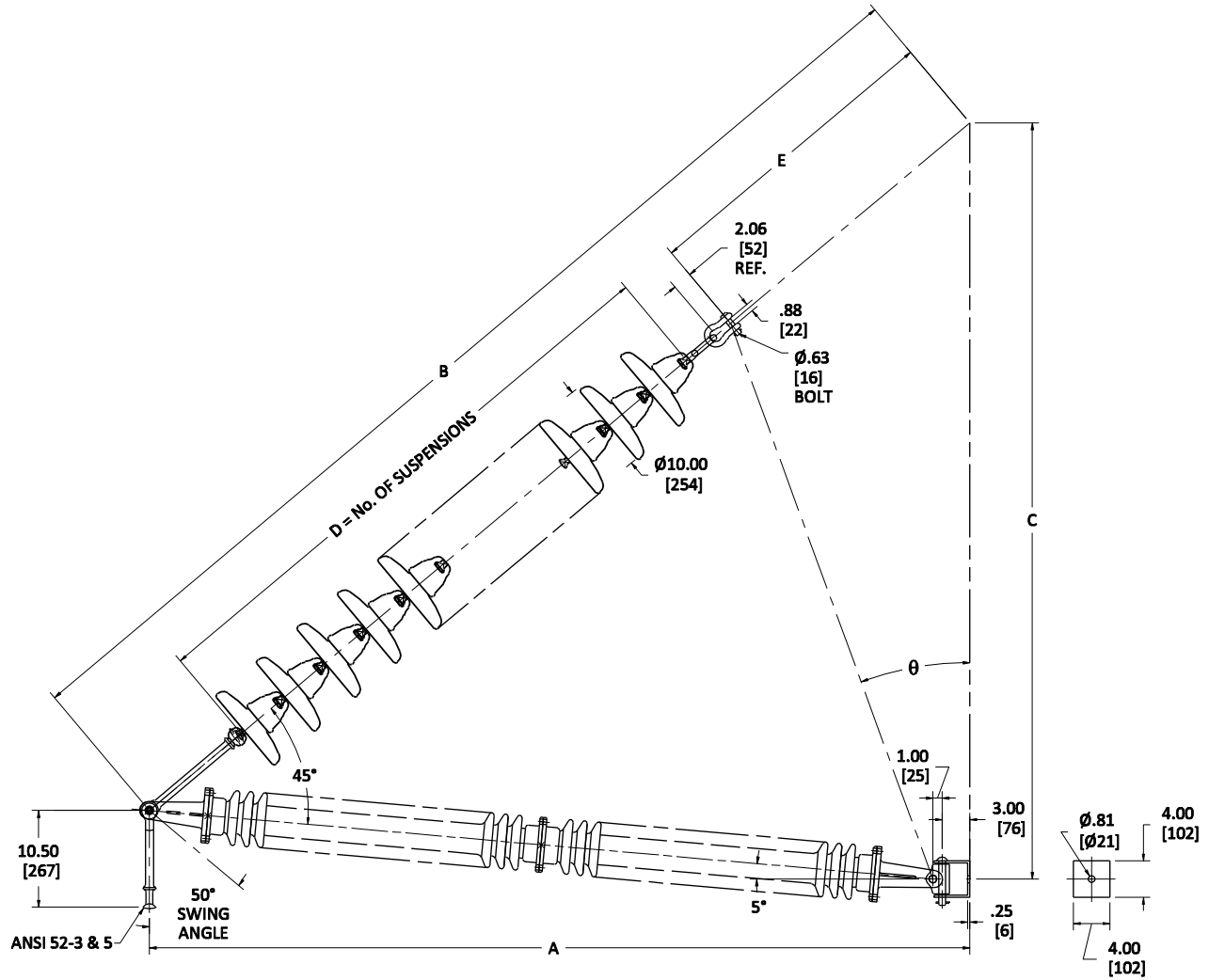
<u>Porcelain Horizontal Vee Assemblies</u>	<u>Page</u>
Horizontal Vee (115 kV-161 kV)	2-4
Horizontal Vee (230 kV)	5-7
Horizontal Vee (345 kV)	8
Horizontal Vee (500 kV)	9
Hybrid H-Vee	10



LAPP Insulators: An Industry Leader

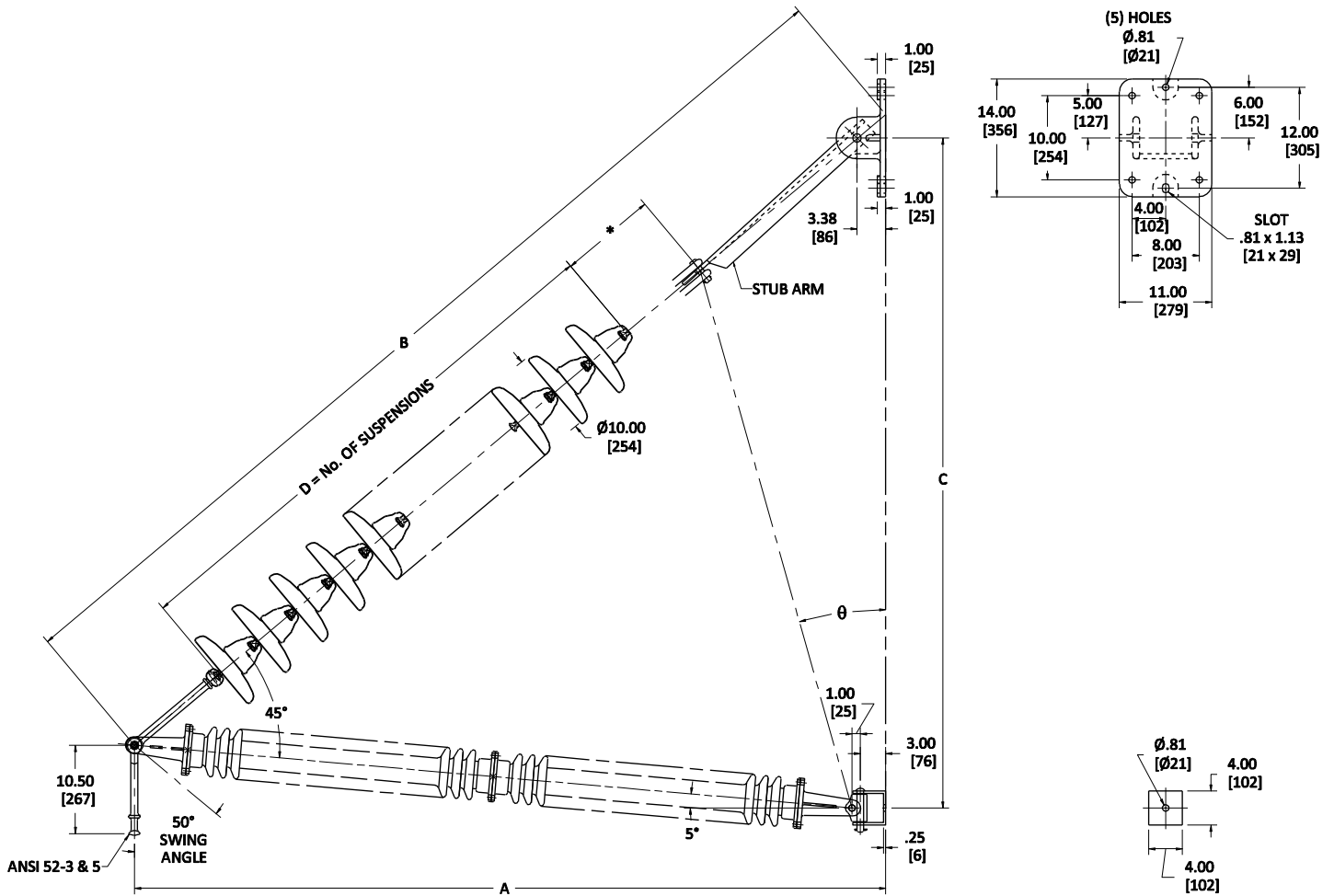
LAPP Insulators is a global leader in advanced compact line insulation designs and production, which allow electric utilities and transmission operators to cut construction costs, reduce right-of-way, minimize maintenance and assure maximum operating reliability. Our Compact Line insulation solutions allow the building of maximum transmission capability into a given right-of-way using LAPP Horizontal Vee Assemblies, Braced Posts, Line Posts and other assemblies.

The compact, armless Horizontal Vee assembly controls conductor position, supporting the conductor on tension loaded suspension insulators, and restrains it in position with a strut insulator. LAPP Insulators offers Horizontal Vee assemblies that meet the requirements for most 115 kV through 500 kV applications. The flexibility of designs allows for modifications to fit special application requirements using similar basic components.



Characteristics

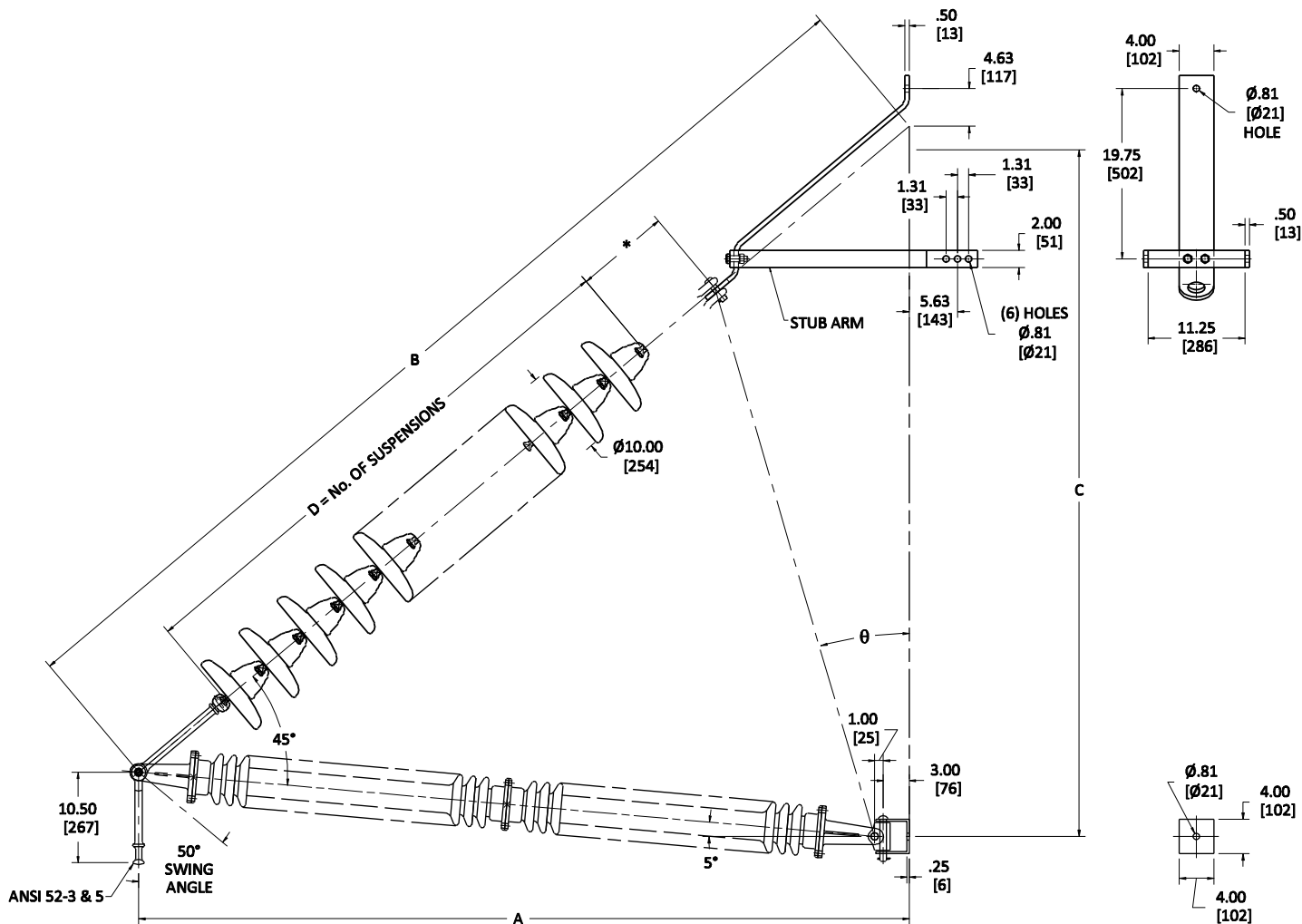
LAPP Catalog Number	Hinge Angle θ	Dimension, In.					Strength Rating, lbs.		Assembly Net Weight lbs.
		A	B	C	D	E	Suspensions	Struts	
307306	22°	61-1/2	80-5/16	57	6	26-9/16	15K	15K	155
307307	22°	67-1/2	88-1/8	62-3/16	7	28-5/8	15K	15K	170
307308	21°	72-1/2	94-5/8	66-3/16	8	29-3/8	15K	15K	190
307309	20°	77-1/2	101-1/8	71-3/8	9	30-1/8	15K	15K	200
307310	20°	83-1/2	108-7/8	77	10	32-1/8	15K	15K	215
307311	20°	89-5/16	116-9/16	82-3/8	11	34-1/16	15K	15K	235



* Linkage made up of standard fittings to hold overall length

Characteristics

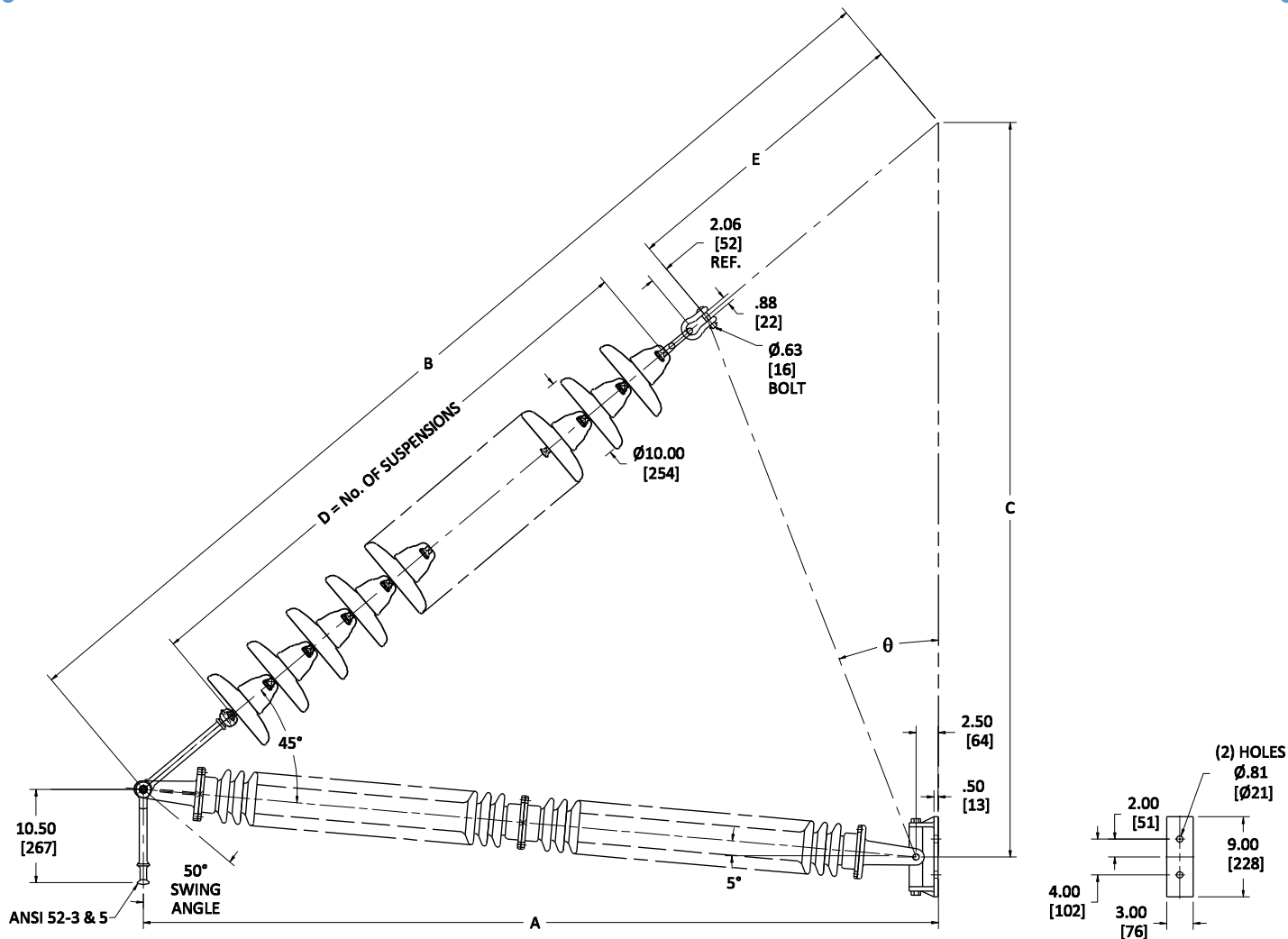
LAPP Catalog Number	Hinge Angle θ	Dimension, In.					Strength Rating, lbs.		Assembly Net Weight lbs.
		A	B	C	D	E	Suspensions	Struts	
307306A	26°	61-1/2	75-13/16	53-3/4	6	-	15K	15K	210
307307A	21°	67-1/2	84-7/8	60-1/8	7	-	15K	15K	225
307308A	20°	72-1/2	90-5/8	64-1/4	8	-	15K	15K	245
307309A	19°	77-1/2	96-3/8	68-3/8	9	-	15K	15K	255
307310A	18°	83-1/2	104-3/16	73-15/16	10	-	15K	15K	270
307311A	16°	89-5/16	112-1/2	79-7/8	11	-	15K	15K	290



* Linkage made up of standard fittings to hold overall length

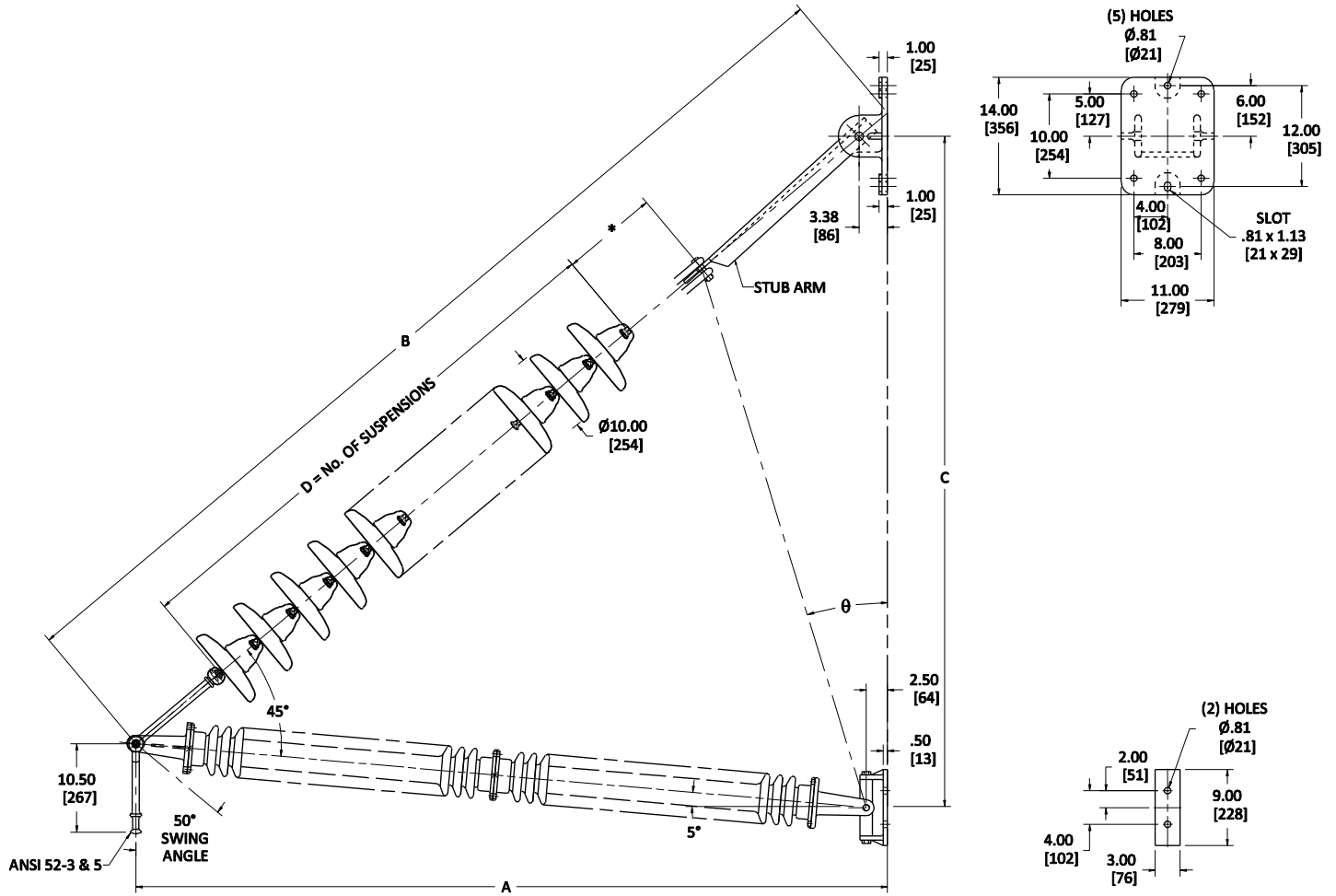
Characteristics

LAPP Catalog Number	Hinge Angle θ	Dimension, In.					Strength Rating, lbs.		Assembly Net Weight lbs.
		A	B	C	D	E	Suspensions	Struts	
307306C	26°	61-1/2	80-1/4	61-1/4	6	-	15K	15K	195
307307C	22°	67-1/2	88-5/8	66-15/16	7	-	15K	15K	210
307308C	21°	72-1/2	94-3/8	71-1/4	8	-	15K	15K	230
307309C	19°	77-1/2	100-13/16	75-7/8	9	-	15K	15K	240
307310C	18°	83-1/2	108-5/8	81-3/8	10	-	15K	15K	255
307311C	16°	89-5/16	116-15/16	87-1/4	11	-	15K	15K	270



Characteristics

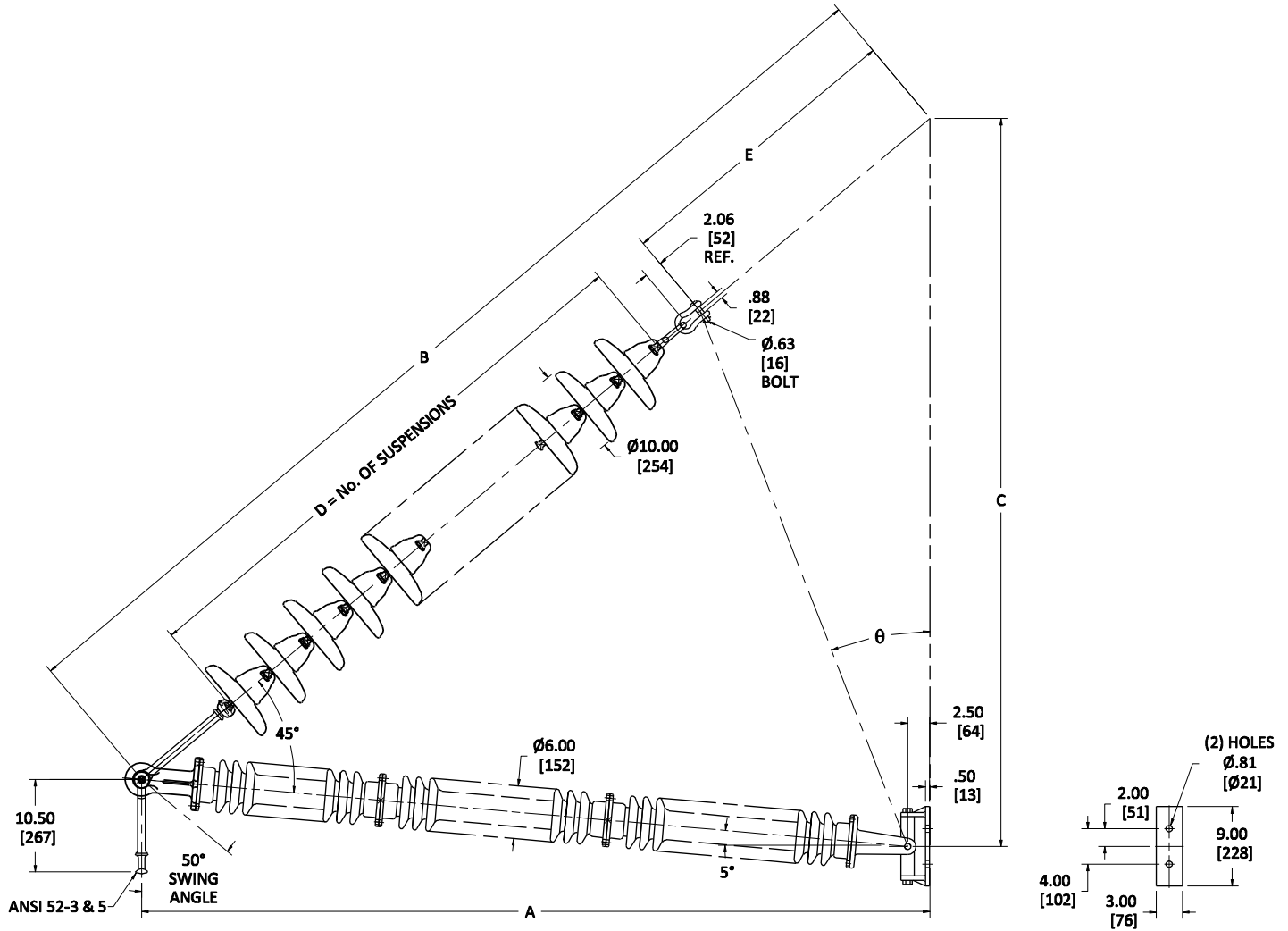
LAPP Catalog Number	Hinge Angle θ	Dimension, In.					Strength Rating, lbs.		Assembly Net Weight lbs.
		A	B	C	D	E	Suspensions	Struts	
307312	22°	96-3/8	125-13/16	89-1/16	12	37-9/16	15K	15K	260
307313	21°	101-3/8	132-3/8	93-3/4	13	38-3/8	15K	15K	275
307314	22°	108-9/16	141-3/4	100-3/8	14	42	20K	25K	375
307315	20°	111-9/16	145-11/16	103-3/16	15	40-3/16	20K	25K	395



* Linkage made up of standard fittings to hold overall length

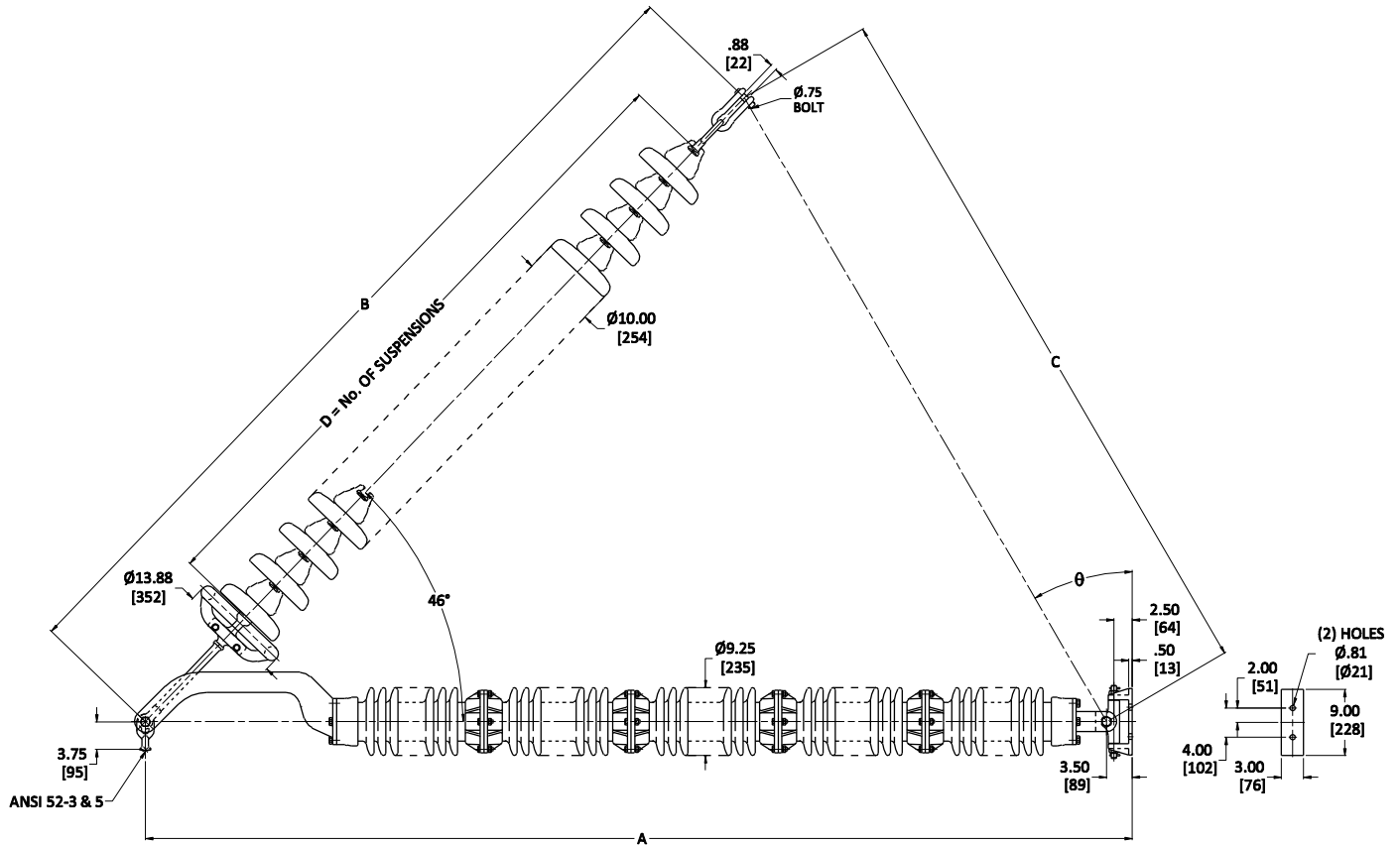
Characteristics

LAPP Catalog Number	Hinge Angle θ	Dimension, In.					Strength Rating, lbs.		Assembly Net Weight lbs.
		A	B	C	D	E	Suspensions	Struts	
307312A	16°	96-3/8	121-9/16	86-3/8	12	---	15K	20K	315
307313A	15°	101-3/8	128-1/8	91	13	---	15K	20K	330
307314A	14°	108-9/16	137	97-3/8	14	---	20K	25K	430
307315A	13°	111-9/16	141-1/4	100-5/16	15	---	20K	25K	450



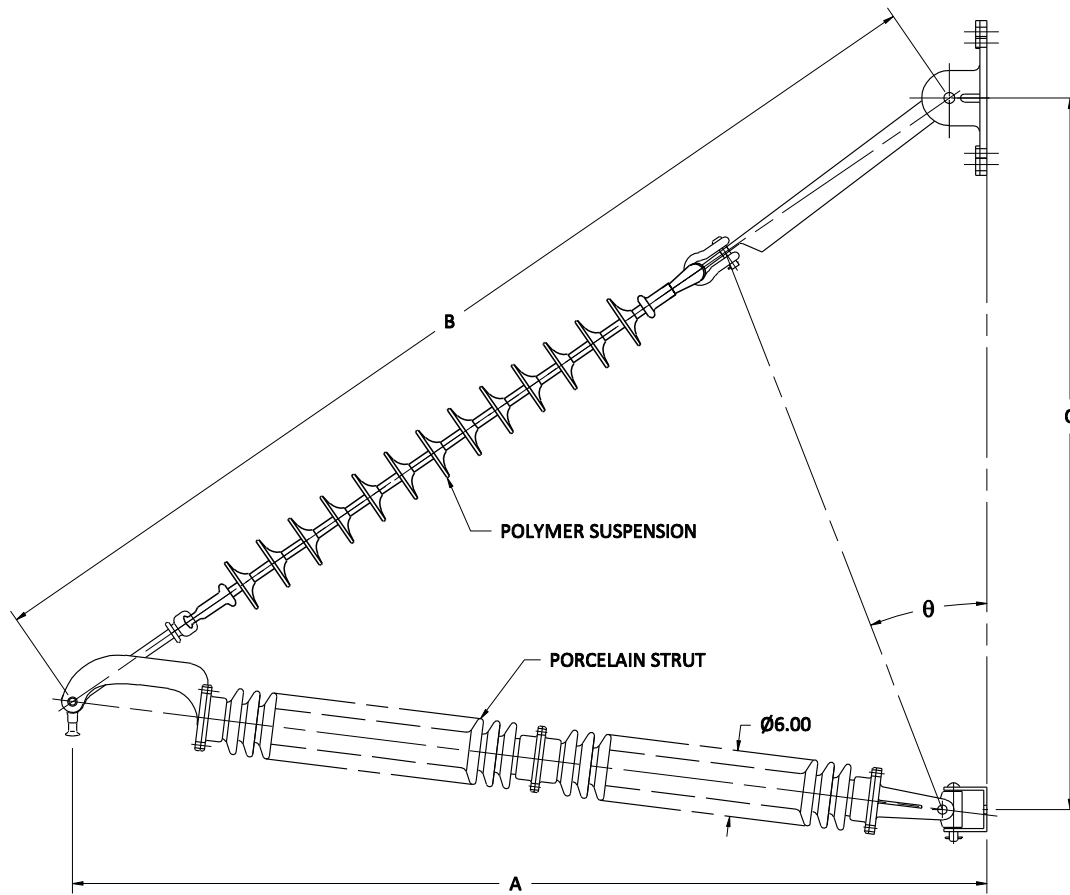
Characteristics

LAPP Catalog Number	Hinge Angle θ	Dimension, In.					Strength Rating, lbs.		Assembly Net Weight lbs.
		A	B	C	D	E	Suspensions	Struts	
307316	20°	117-1/4	153-1/8	108-1/2	16	41-7/8	20K	25K	420
307317	20°	123-5/16	161	114	17	44	20K	25K	445
307318	19°	127-1/2	166-1/2	117-15/16	18	43-3/4	20K	25K	465



Characteristics

LAPP Catalog Number	Hinge Angle	Dimension, In.					Strength Rating, lbs.		Assembly Net Weight lbs.
		A	B	C	D	E	Suspensions	Struts	
305963	30°	192-5/8	278-3/16	200-3/4	25	---	40K	30K	1075



Characteristics

LAPP Catalog Number	Voltage, kV	Hinge Angle θ	Dimension, In.				Strength Rating, lbs.	
			A	B	C	E	Suspensions	Struts
321422	115/138	21°	82.8	96.4	64.4	---	25k	25k
321423	230	13°	111.6	141.25	100.4	---	25k	25k
321462	345/500	12°	152.3	193.6	137.75	---	25k	25k
321600	345/500	12.5°	165.3	203.7	137.75	---	25k	25k
321412	500	30°	196.1	283.3	204.4	---	25k	25k