



# LAPP Long Rod Insulators

## Revolutionizing Power Transmission Lines

In the world of electrical engineering and utility management, the quest for more reliable, durable, and efficient components never ceases. Among the champions of this relentless pursuit is the LAPP Long Rod insulator, a pinnacle of innovation designed to redefine the standards of power transmission line performance.

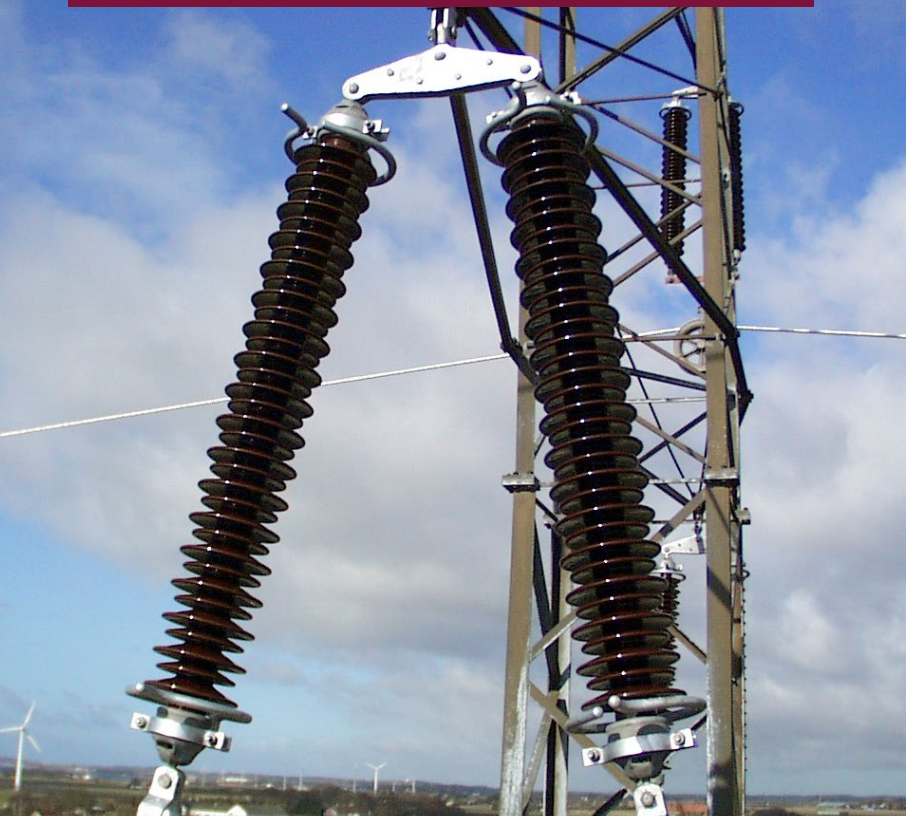
[www.lappinsulators.com](http://www.lappinsulators.com)



## Features of LAPP Long Rod Insulators

LAPP Long Rod insulators stand apart thanks to a unique set of features that ensure unmatched reliability and durability:

- **Extended Creepage Distance:** These insulators offer up to 30% more creepage distance compared to standard Cap & Pin insulators, enhancing insulation effectiveness significantly.
- **Puncture-Proof Design:** The structural integrity and design of the Porcelain Long Rod Insulators eliminate the risk of puncture, ensuring continuous, uninterrupted service.
- **Optimized Flashover Distance:** Leveraging advanced materials, LAPP Long Rods ensure that any flashover occurs externally, thereby safeguarding the insulator's integrity.
- **Self-Cleaning Properties:** A unique structural design includes sheds and core parts, naturally cleansing under rainfall, making maintenance minimal.
- **Lightweight Yet Durable:** By reducing metal components and relying on high-quality porcelain, these insulators are lighter, reduce corrosion concerns, and are easier to install.





# Benefits That Make a Difference

Choosing LAPP Long Rod Insulators brings a variety of benefits that impact not only operational efficiency but also long-term financial planning:

- **Reliability and Safety:** The combination of high-strength materials and innovative design results in a product that exceeds the standard requirements for power transmission reliability and safety.
- **Cost-Effective:** Initial costs align with or are lower than those of competing technologies, but the true value is seen in their longevity and minimal maintenance requirements. Over their lifespan, the total cost of ownership of LAPP Long Rod insulators is significantly lower compared to other insulator types.
- **Environmentally Resilient:** Perfectly tailored for all climates, LAPP Long Rod insulators hold up against extreme weather conditions, environmental pollutants, and biological threats like wildlife damage.



## Applications: Where Excellence Meets Demand

The versatility and superior performance of LAPP Long Rod Insulators make them the ideal solution for a wide range of applications:

- **Electrical Transmission Lines:** Offering unparalleled efficiency and reliability, they are the cornerstone of modern, hassle-free grid functioning.
- **Compact Lines:** Their robust design is especially beneficial for compact lines where space is at a premium but high performance is non-negotiable.
- **High Pollution Areas:** The self-cleaning properties and optional RTV coatings make these insulators exceptionally resistant to the challenges posed by heavily polluted environments.

Ultimately, **LAPP Long Rod Insulators** embody a leap forward in electrical insulator technology, marrying decades of industry experience with innovative design and material science. Their introduction to the market isn't just an evolution in insulator technology—it's a reassurance to utilities and their customers that the future of **power transmission is brighter, safer, and more reliable than ever before.**

Whether for new installations or upgrading existing infrastructure, the LAPP Long Rod is a solution that promises not just to meet but exceed the demands of modern electrical transmission challenges. With LAPP Long Rod Insulators, power utilities can look forward **to decades of effortless, uninterrupted service, and a future where the lights never go out.**